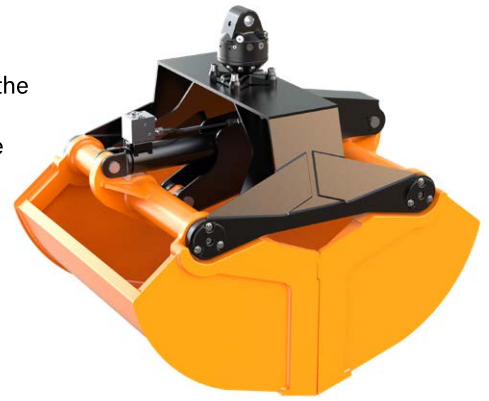


A robust clamshell bucket for handling loose material such as sand, gravel, soil - perfectly matched to heavy duty work on vehicle mounted cranes.

- ▷ **Excellent filling characteristics** of the rugged grapple due to the special shape of the buckets and the wide separation between their axes that enables wide opening.
- ▷ **Practically no "left overs"** of the material to be picked up as the working edges are vertical when the buckets are open and allow a deep plunge into a pile of material.
- ▷ **High stability** through reinforced buckets, torsion-free frame, generously dimensioned bearing system and the use of 500 HB steel in the manufacture of cutting edges.
- ▷ **Combination of compensator mechanism and cylinder guard** has many advantages: parallel action, longer life for piston rod and seals, significant weight savings.
- ▷ **Efficient handling** with high closing forces (6,160 lbf at an operating pressure of 3,750 psi).



Package high volume clamshell bucket KM 602 c

Type	Volume (c.y.)	Width B (in)	Opening max. (in)	Number of teeth (optional)	Self weight (lbs)	Closing force (lbf)	Load capacity (lbs)
KM 602-400 c	0.52	32	72	9	1,023	6,160	6,600
KM 602-500 c	0.65	39	72	9	1,122	6,160	6,600

Package consists of: high volume clamshell bucket, rotator KM 04 F, short connecting hoses KM 203 01, upper suspension KM 501 4500, (without teeth), non-return valve

High volume clamshell bucket KM 602

Type	Volume (c.y.)	Width B (in)	Opening max. (in)	Number of teeth (optional)	Self weight (lbs)	Closing force (lbf)	Load capacity (lbs)
KM 602-300	0.39	20	72	5	924	6,160	6,600
KM 602-400	0.52	32	72	9	990	6,160	6,600
KM 602-500	0.65	39	72	9	1,023	6,160	6,600
KM 602-650	0.85	47	72	9	1,056	6,160	6,600
KM 602-1000	1.31	47	86	9	1,518	5,060	6,600

Accessories

Type	Description
KM 04 F	KINSHOFER rotator for KM 602
KM 685 06 eye set 2	welded eyes
KM 685 07 set	wear plates to protect horizontal cutting edges (2 pieces)

Requirements of truck crane

Operating pressure: 3,750 - 5,350 psi
Oil flow: 9 - max. 20 GPM

Pump capacity/Operating pressure
 > 10.56 GPM / 3744 psi
 ≤ 10.56 GPM / 4608 psi

Technical drawings

