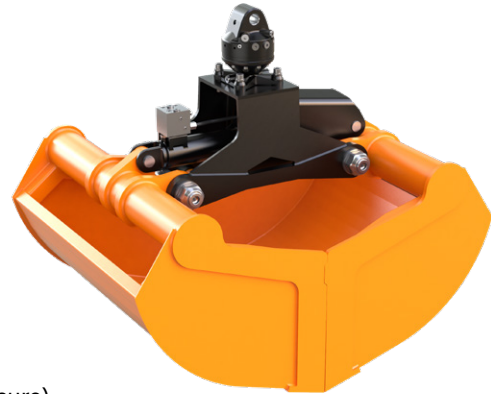


The high volume clamshell bucket KM 622 has a significant narrow frame and can therefore fulfill small digging tasks besides the handling.

- ▷ **Suitable for digging** due to the narrow frame.
- ▷ **Compact design** due to the narrow frame enables manual filling of the bucket without obstacles.
- ▷ **Practically no „left overs“** of the material to be picked up as the working edges are vertical when the buckets are open and allow a deep plunge into a pile of material.
- ▷ **High stability** through reinforced buckets, torsion-free frame, generously dimensioned bearing system and the use of 500 HB steel in the manufacture of cutting edges.
- ▷ **Combination of compensator mechanism and cylinder guard** has many advantages: parallel action, longer life for piston rod and seals, significant weight savings.
- ▷ **Efficient handling** with high closing forces (20 kN at 26 MPa operating pressure).



### Packages high volume clamshell bucket KM 622 c

Type	Volume (litre)	Width (mm)	Opening A max. (mm)	Number of teeth (optional)	Weight (kg)	Closing force (kN)	Load capacity (kg)
KM 622-300 c	300	640	1670	5	360	20	3000
KM 622-400 c	400	800	1670	9	390	20	3000
KM 622-500 c	500	1000	1670	9	415	20	3000

**Package consists of:** high volume clamshell bucket, rotator KM 04 F, short connecting hoses KM 203 01, upper suspension KM 501 (4500), non-return valve

**Note:** UK package of KM 622-400c/-500c incl. KM 04 F, KM 501, KM 203 01, KM 685 06 eye set 2, KM 685 07 set

### High volume clamshell bucket KM 622

Type	Volume (litre)	Width (mm)	Opening A max. (mm)	Number of teeth (optional)	Weight (kg)	Closing force (kN)	Load capacity (kg)
KM 622-300	300	640	1670	5	315	20	3000
KM 622-400	400	800	1670	9	345	20	3000
KM 622-500	500	1000	1670	9	370	20	3000

### Accessories

Type	Description
KM 04 F	recommended KINSHOFER rotator for KM 622
KM 04 S68-30US	recommended KINSHOFER shaft rotator for heavy duty tasks – up to 4500 kg load capacity
KM 505 HD	quick change system HD for shaft-type rotator KM 04 S68-30US
KM 685 06 hook set 2	welded hooks (2 pieces)
KM 685 07 set	wear plates to protect horizontal cutting edges (2 pieces)

### Requirements of truck crane

#### Operating pressure at oil flow:

26 MPa (260 bar) at max. 75 l/min / 26 - 37 MPa (260 - 370 bar) at max. 40 l/min

### Technical drawings

